



625

LOFTS@ EUCLID

WELCOME TO THE NOT-SO-ORDINARY LIFE

For some people, the day-in, day-out of an ordinary life makes sense. But that is not enough for you.

You are driven. You work your mind, body and spirit to its limits each day. So the place you call home matters. It must be a neighborhood where your close friends can gather, but it must also be a space you can have a quiet evening dinner. It must be a place for your not-so-ordinary kind of life.

You found it with the Lofts@Euclid - a pet friendly, historic loft building with the character of a vintage warehouse and the state-of-the-art amenities of the 21st century. Each personalized space is customized to create your greatest comfort – combining soaring ceilings and exposed brick walls with digital temperature control and contemporary kitchen technology.

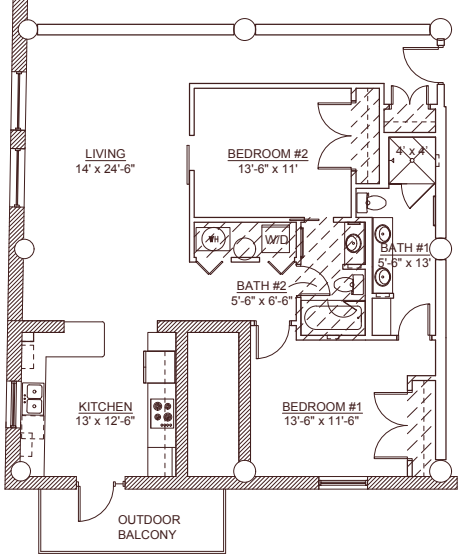
OTHER WAYS WE CREATE A SPACE BEYOND YOUR IMAGINATION

- 24-Hour Fitness Center
- Indoor Parking
- Hi-Tech Security Access 24/7
- Vast Rooftop Oasis
- Sky Lawn featuring lawn sports
- High Speed Internet w/WiFi
- Stunning City Views
- Clubhouse Wet Bar
- Clubhouse Fireplace Room
- Walk to Restaurants & Shops
- Steam Room
- Electric Car Plug-in
- Pet Friendly Residence
- Large Closets
- Pet Spa
- In-Unit Storage
- Rooftop Hot Tub
- Theater & Billiards Room
- Rooftop Grills
- Bike Storage



FOR LEASING INFORMATION
call 314.685.8550 or visit us
online at LoftsatEuclid.com

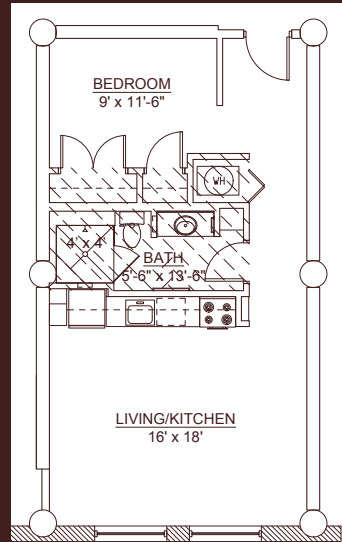
625 N. Euclid Avenue Saint Louis Missouri 63108



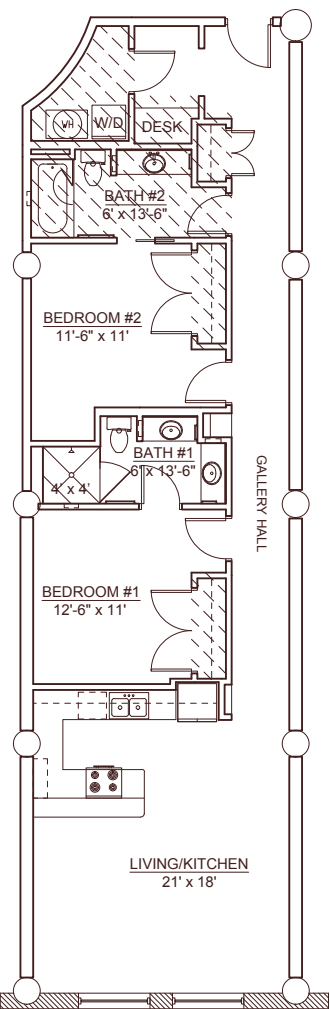
EUCLID
1251 SQFT
2 BED
2 BATH
CORNER

LOFTS@ EUCLID

MODERN LIVING.
HISTORIC STYLE.



DELMAR
604 SQFT
1BED / 1BATH



LINDELL
1206 SQFT
2 BED
2 BATH



MCPHERSON
750 SQFT
1BED
1BATH

